

MONTHLY MEMBERSHIP PROGRESS REPORT

District 11 B2

Results as of: 4/30/2025

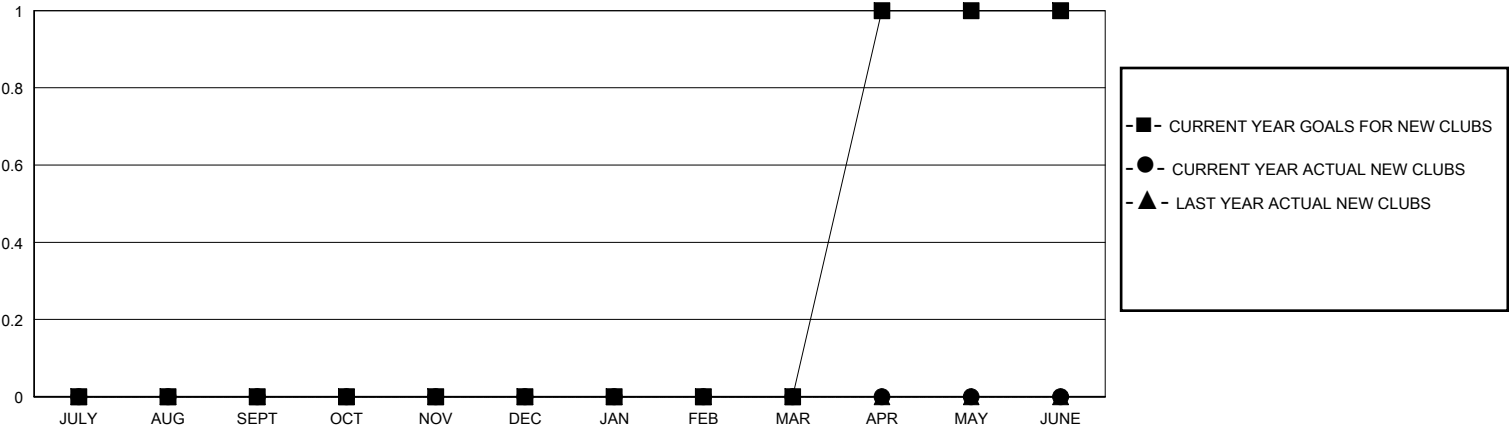
GMT:

LOCATION MICHIGAN

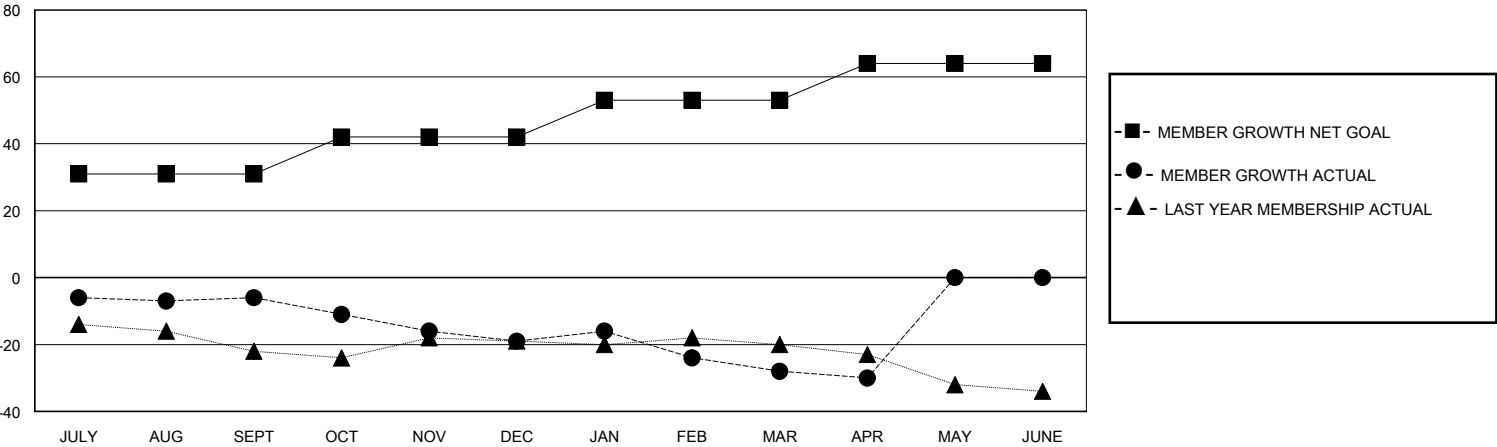
GMT CA

Clubs				Members			
RESULTS FOR 2024-2025				RESULTS FOR 2024-2025			
QUARTER	NEW CLUB GOAL	NEW CLUBS	DROPPED CLUBS	QUARTER	MEMBER GROWTH NET GOAL	MEMBER GROWTH ACTUAL	DROPPED MEMBERS ACTUAL (including transfers)
JULY/AUG/SEPT	0	0	0	JULY/AUG/SEPT	31	26	27
OCT/NOV/DEC	0	0	0	OCT/NOV/DEC	11	16	25
JAN/FEB/MAR	0	0	0	JAN/FEB/MAR	11	21	25
APR/MAY/JUNE	1	0	0	APR/MAY/JUNE	11	1	3

GOALS AND ACTUAL NEW CLUBS CUMULATIVE



GOALS AND ACTUAL MEMBERS CUMULATIVE



DROPPED CLUBS: 0	15 CLUBS OF 31 ADDED 1 OR MORE NEW MEMBERS	<u>GENDER DISTRIBUTION</u> MALE 499 (63.41%) FEMALE 287 (36.47%)
<u>DROPPED MEMBERS</u> DECEASED 13 CLUB CANCELLED 0 OTHER 67 TOTAL 80	CLICK HERE FOR CUMULATIVE MEMBERSHIP DATA	TOTAL FAMILY UNIT MEMBERS 0 FAMILY MEMBERS PAYING HALF DUES 0